

C T O & G

Connecticut Cottages and Gardens

COTTAGESGARDENS.COM | JULY/AUGUST 2022

PATTERN PLAY
AT THE HARTFORD SHOWHOUSE

HARTFORD DESIGNER SHOWHOUSE

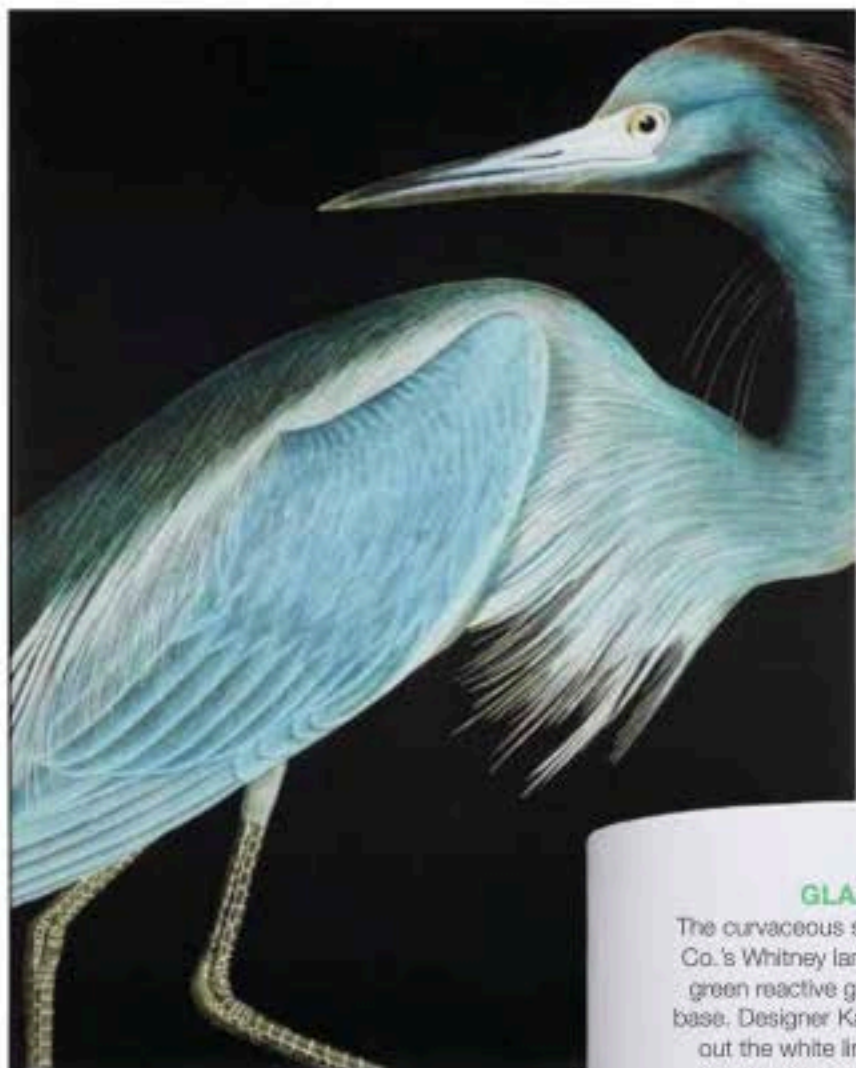


Presented by exclusive media sponsor CTC&G, the 15th Junior League of Hartford Designer Showhouse made a triumphant return this past June. Usually held every three years, the capital-region event was postponed in 2021 due to Covid restrictions. As the primary fundraiser for JLH community initiatives, over the years, it has raised more than \$1.6 million to support projects and programs in the Greater Hartford area. To transform the home, a select group of interior and landscape designers, led by interior designer Anthony Baratta as honorary design chair, worked with generous sponsors to restore, renovate and reimagine a historic West Hartford Tudor.

BY **CATRIONA BRANCA** | PHOTOGRAPHY BY **ANASTASSIOS MENTIS**



WHAT'S NEW



BIRDS OF A FEATHER

Inspired by the work of Audubon, Ethan Allen presents the Grand Heron series of giclée prints, framed in a gray wood grain. *Grand Heron I* and *Grand Heron II*, measuring 43-inches by 53-inches, can fly solo or be hung as a pair. \$1,800, ethanallen.com.

FIRE LIGHT

The Orionis lantern by Mercana is composed of natural wood and black metal. The glass hurricane houses a candle for summer evenings on the porch by Moreau Designs. Available through *Bungalow on the Ave.*, Berlin, bungalowontheave.com, mercana.com.



GLAZED OVER

The curvaceous silhouette of Jamie Young Co.'s Whitney lamp is accentuated with a green reactive glaze and a rich gold-leaf base. Designer Kate Smith opted to switch out the white linen shade for a colorful custom topper in her breakfast nook. \$290, available through the Accessory Store, Stamford, stamfordshades.com, jamieryoung.com.



MIX + MATCH

Graphic rug designs are possible with Flor carpet tiles. Perfect for high traffic and children's spaces—like the space created by SKM Design—the individual squares can be swapped out when dirty or worn. \$16 per tile, flor.com.



OLD IS NEW

Floorcloths have been around since Colonial times and are prized today for their versatility and easy maintenance. Spicher and Company offers a huge assortment of vinyl floorcloths in graphic, classic and historical motifs. The striking Whig Rose/the Day Has Eyes pattern, used in the Baratta bedroom, hails from the American Folk Art Museum collection. \$42–\$1,925, available through *The Post*, Westport, thepostct.com, spicherandco.com.



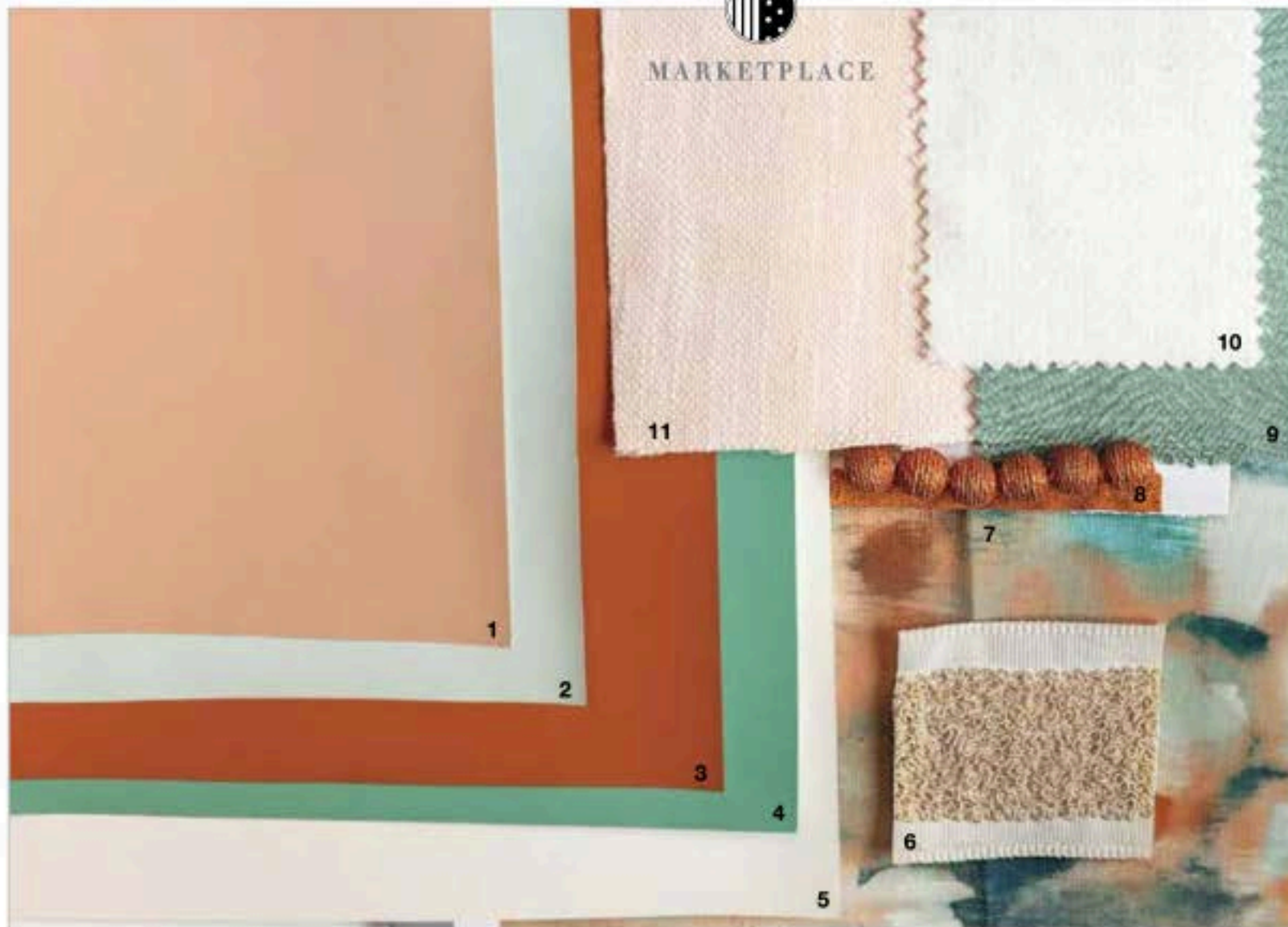
DREAM TEAM

Kristen McCory chose designer Robert Passal's wallcovering for her foyer transformation. In vinyl, Renzo delights with its abstract movement and swirls of lilac color. Price upon request, available to the trade through *Somerselle*, somerselle.com.





MARKETPLACE



MOREAU DESIGNS

Screened-In Porch, Stone Patio

1. Benjamin Moore, Ipanema.
2. Benjamin Moore, Swept Away.
3. Benjamin Moore, Warmed Cognac.
4. Sherwin-Williams, Parisian Patina.
5. Sherwin-Williams, Alabaster.
6. Kravet, Aswirl, Ivory.
7. Clarke & Clarke, Marissa, Teal/Spice.
8. Kravet, Juteball Cord, Clay.
9. Anna Elisabeth, S2341, Pool.
10. Anna Elisabeth, S4397, Porcelain.
11. Anna Elisabeth, Greenhouse Fabrics, S2238, Pink.



FIONA LEONARD INTERIORS

Front Door and Entryway

1. Tile America, Tuscan Brick, White.
2. Benjamin Moore, 2024-30.
3. Backdrop, Jawbreaker.
4. Backdrop, Saturday on Sunday.
5. Flat Vernacular, Swallowtail, Jungle Evening, wallcovering.



MCCORY INTERIORS

Foyer and Landing

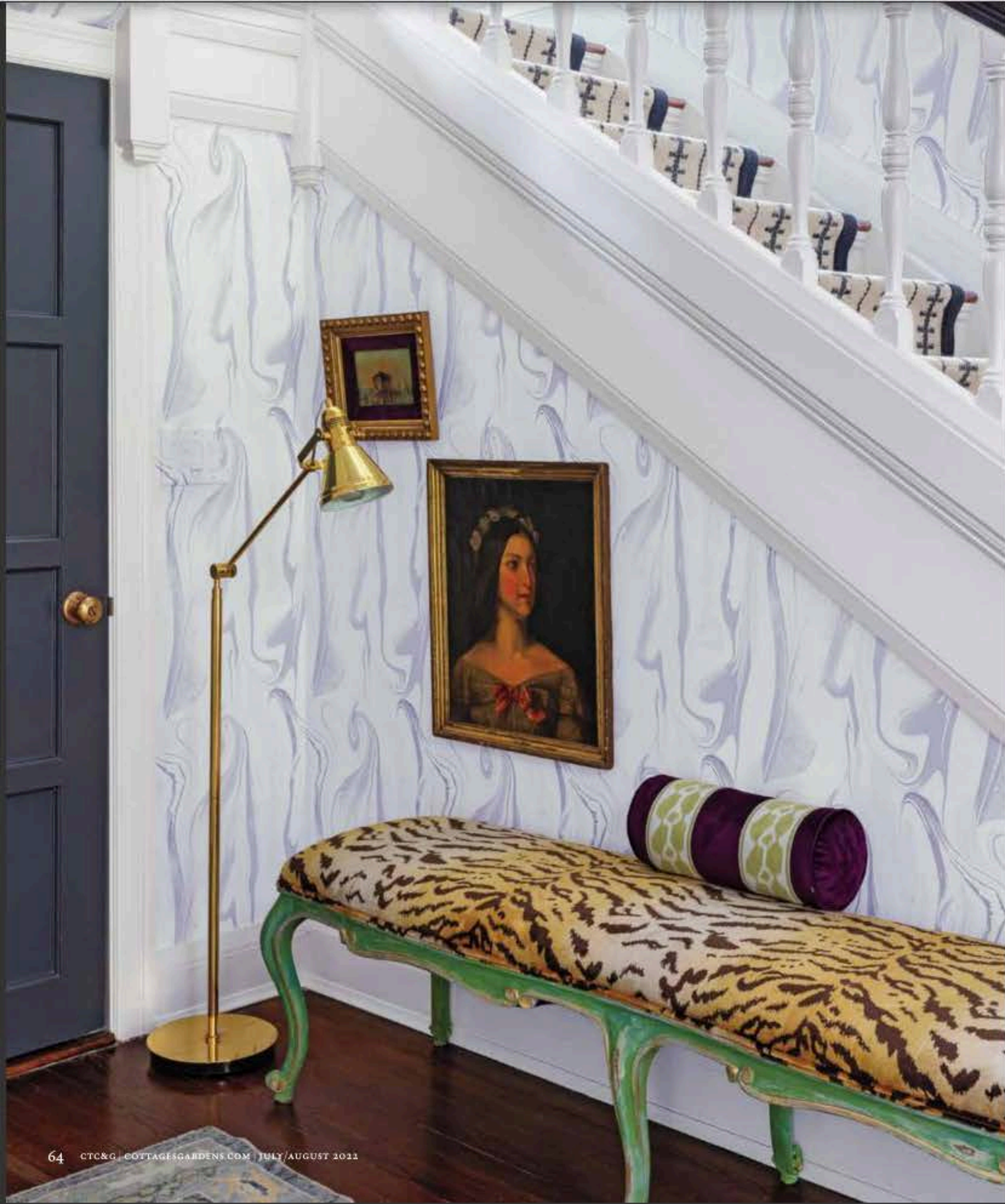
1. Scalamandré, Lark Stripe, Bluebell.
2. Fabricut, Calders Fringe, 04.
3. S. Harris, Moxie Mchair, 22.
4. Somerselle, Robert Passal, Renzo, Lilac, wallcovering.
5. Clarke & Clarke, Mansour, Damson.
6. Lee Jota, Maisie Linen, Tan/Leaf.
7. Silver State, Lido, Aubergine.
8. Fabricut, Darcy, 01.



CAMDEN GRACE INTERIORS

Dining Room

1. Pierre Frey, Toile de Nantes, Vintage Green.
2. Anna Elisabeth, Greenhouse Fabrics, Daffodil.
3. RM Coco, Villa Burgundy.
4. Studio Four NYC, Anna Spiro, Kandil, Natural.
5. Stark, Walton, Sky.
6. Phillip Jeffries, Gold Coast Silk, Beechwood Beige, wallcovering.



MCCORY INTERIORS

FOYER AND LANDING

The elegant swirls of Robert Passal's dramatic Renzo wallcovering in lilac and a bench from the Local Vault marries thoughtful, modern touches with the home's classic detailing throughout the two-story foyer. Designer Kristen McCory painted the balustrade and stair rail in a two-tone color scheme, which keeps things graphic. Framed contemporary art by Raul Morren is hung above a contemporary console. Upstairs, a window seat sports a Lee Jofa linen, while window treatments in an Avant Garde fabric punctuate the space with green. Lighting is by Visual Comfort; the stair runner is Stanton Carpet Ticking Stripe 2 in Tuxedo.